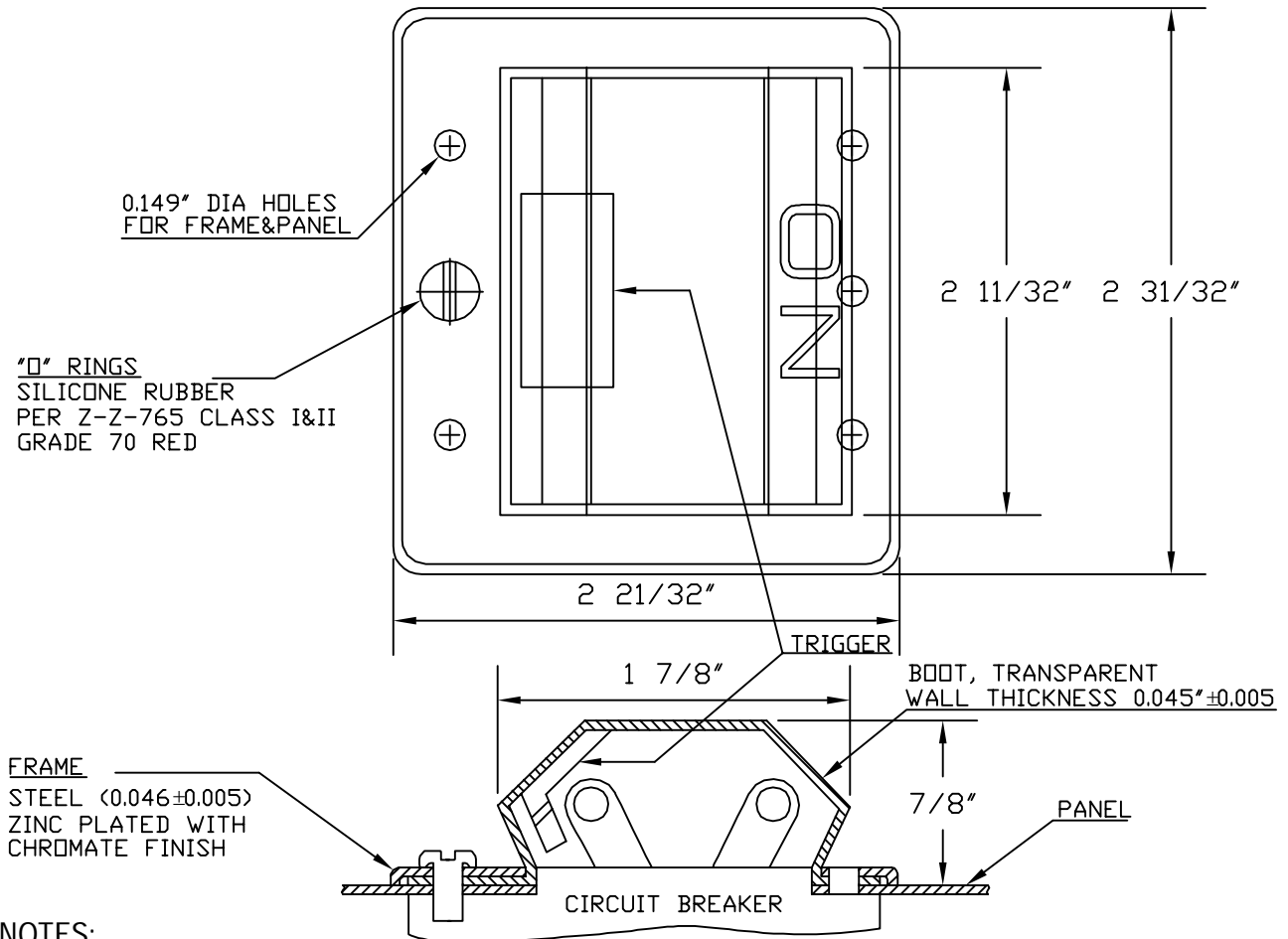


## SPECIFICATION

**Material:** Boot: APM RUBRGLAS™ (transparent silicone rubber), conforms to type ASTM D 1418. Frame: steel, zinc plated with chromate finish. Screw: SEELSKREW® (self-sealing screws), stainless steel with silicone rubber O-ring.  
**Temperature Range:** HEXSEAL: -80°F to +400°F  
**Pressure Range:** Dust tight and splashproof.  
**Operational Life:** 10,000 actuations (minimum).  
**Shelf Life:** Excess of 25 years.  
**Resistant to:** Salt spray, sunlight, ozone, weather, corona and most acids.

**Notes:**  
 1. Mounting screws are supplied in lengths shown unless otherwise specified.  
 2. New sizes and types of RUBRGLAS-SEELS® are being added regularly. Please request other types and styles as required.  
**Agency Recognition:** Front Panel mounted Circuit Breaker Boots are UL- listed to UL Std. 50, types 1,2,3,12,12K and 13. Back-of-Panel mounted Circuit Breaker boots are UL-listed to UL Std. 50, type 1. Also meet CSA standards.



**NOTES:**  
 ASSEMBLY CONSISTS OF 1 BOOT, MAT'L APM RUBRGLAS®, 1 FRAME MAT'L C.R.S. ZINC PLATED WITH CHROMATE FINISH, & 6#6-32 APM SEELSKREWS® LENGTH = 3/8 UNLESS OTHERWISE SPECIFIED

**TOLERANCES: UNLESS OTHERWISE NOTED ±1/32**

J	FRAME MAT'L CHANGED, WALL THICKNESS TOL. 0.010 CHANGED TO 0.005, HOLE DIM. Ø0.160" CHANGED TO Ø0.149", DELETED TO "DESIGN TO MEET MIL-5423" and DELETED TO SEELSKREW INFORMATION	S. GOK	05.05.09
I	SCREW QUANTITY CHANGED	S. GOK	11.05.08
H	CAD COMPUTER GENERATED		11.13.02
G	TRIGGER ADDED	M. MORSE	04.26.93
REV.	DESCRIPTION	DATE	
MAXIMUM AND MINIMUM MEASUREMENTS ARE STATED DIRECTLY ON EACH DIMENSION.	TITLE: CIRCUIT BREAKER BOOT, TOGGLE, WIDE ANGLE, TRANSPARENT (3 POLES)	ENG.	
		DWN. J. PALUMBO	12.29.58
		CHKD. J. CELLA	05.05.09
MAT'L: RUBRGLASS ① POLYMER TYPE ASTM D 1418	APM-HEXSEAL CORPORATION	SCALE 1:1	DWG. NO. CT-1050
FINISH: GRADE 50 TRANSPARENT			

THIS DRAWING COVERS PROPRIETARY ITEM AND IS THE PROPERTY OF THE APM-HEXSEAL CORPORATION.  
 THIS DRAWING IS NOT TO BE COPIED OR USED WITHOUT THE WRITTEN APPROVAL OF AN OFFICER OF THE APM-HEXSEAL CORPORATION.